

e'line

PM Kits

DOC 105 849 - EN - 1.4 - 05/2019



 *true espresso with a touch*

Document

e'line PM Kits

Version: 1.4 - 05/2019



105 849 - EN

Version	Soft	Date	Modification
1.4	N/A	13.05.19	New layout, minor corrections.



Manufacturer

Eversys AG

Rue du Biais 19

1957 Ardon VS

Switzerland

Tel.: +41 (0)27 305 25 50

email: cso@eversys.com

Hotline

email: hotline@eversys.com

Tel: [+41 27 588 00 1](tel:+4127588001)

Copyright ©

The reproduction, even partially, of this document is forbidden. No part may be copied in any form, and it may not be used, edited nor transmitted by any electronic means (photocopy, photography, magnetic supports or other recording processes), without the written authorization of Eversys AG. All rights and particularly reproduction, translation, edition, distribution and also industrial property and recording are reserved.

Table of Contents

1	PM kits.....	5
1.1	Complete service kit.....	5
1.1.1	12 months (2 x 50'000).....	5
1.1.2	24 months (2 x 100'000)	5
1.2	102 821 Brew PM kit	6
1.2.1	102 614/A - Kit SAV - Fitting top piston rod.....	6
1.2.2	102 262/E - Coffee outlet hoses kit.....	6
1.2.3	Brew module overview.....	7
1.3	102 826 Grinder PM kit	8
1.3.1	Grinder module overview.....	9
1.4	104 983 Everfoam V2 PM kit	10
1.4.1	104 213/C - Kit SAV Check Valve ø6/6	10
1.4.2	Everfoam overview.....	11
1.5	102 824 PM Kit Milk.....	12
1.5.1	103 132 Service Kit Milk - base	12
1.5.2	Milk module overview	13
1.5.3	102 865 Kit SAV solenoid valve 25mm - ODE	14
1.5.4	102 867 Kit SAV valve 32mm - ODE	14
1.5.5	104 213/C - Kit SAV Check Valve ø6/6	14



1.6	102 822 Service Kit Hydraulic - ODE	16
1.6.1	103 129 Service Kit Hydraulic - base.....	16
1.6.1.1	102 862 - Serv. Kit - Drain tube Hydraulic	16
1.6.1.2	100 638 Set plunger expansion valve, assy.....	17
1.6.2	Hydraulic module overview	17
1.6.3	102 865 Kit SAV solenoid valve 25mm - ODE	18
1.6.4	102 867 Kit SAV valve 32mm - ODE	18
1.7	102 823 PM kit steam.....	20
1.7.1	103 135 Service Kit Steam - base	20
1.7.2	102 412/A - Kit SAV safety valve steam unit	20
1.7.3	Steam module overview	21
1.7.4	102 865 Kit SAV solenoid valve 25mm - ODE	22
1.7.5	102 867 Kit SAV valve 32mm - ODE	22
1.8	102 825 Service Kit Frame - ODE.....	24
1.8.1	103 138 Service Kit Frame - base	24
1.8.2	106 732 Kit SAV valve 32mm water inlet ODE	24
1.8.3	Frame overview	25

PM kits 1

Chapter Overview

This chapter outlines the content of each Preventive Maintenance (PM) kit.

1.1 Complete service kit

1.1.1 12 months (2 x 50'000)

	Type	e'2 ct	e'2	e2 m	e'4	e'4 m	e'6	e'6 m	Shotmaster
	Service Kit	103 083	103 084	103 085	103 086	103 087	103 088	103 089	103 095
102 821	Brew <i>(See 1.2 page 6)</i>	1	1	1	2	2	3	3	2
102 825	Frame <i>(See 1.8 page 24)</i>	1	1	1	1	1	2	2	1
102 823	Steam <i>(See 1.7 page 20)</i>	-	1	1	1	1	1	1	-
104 983	Everfoam <i>(See 1.4 page 10)</i>	-	-	1	-	2	-	2	-
102 824	Milk <i>(See 1.5 page 12)</i>	-	-	1	-	2	-	2	-
102 822	Hydraulic <i>(See 1.6 page 16)</i>	-	-	-	-	-	-	-	-
102 826	Grinder <i>(See 1.3 page 8)</i>	-	-	-	-	-	-	-	-

1.1.2 24 months (2 x 100'000)

	Type	e'2 ct	e'2	e2 m	e'4	e'4 m	e'6	e'6 m	Shotmaster
	Service Kit	102 940	102 941	102 942	102 943	102 944	102 945	102 946	103 096
102 821	Brew <i>(See 1.2 page 6)</i>	1	1	1	2	2	3	3	2
102 825	Frame <i>(See 1.8 page 24)</i>	1	1	1	1	1	2	2	1
102 823	Steam <i>(See 1.7 page 20)</i>	-	1	1	1	1	1	1	-
104 983	Everfoam <i>(See 1.4 page 10)</i>	-	-	1	-	2	-	2	-
102 824	Milk <i>(See 1.5 page 12)</i>	-	-	1	-	2	-	2	-
102 822	Hydraulic <i>(See 1.6 page 16)</i>	1	1	1	2	2	3	3	2
102 826	Grinder <i>(See 1.3 page 8)</i>	1	1	1	1	1	2	2	1

1.2 102 821 Brew PM kit



Fig. 1-1: *Ordering cut to 1 m.

- | | |
|---|---|
| <p>(1) 100 059 2 x Piston seal \varnothing45</p> <p>(2) 101 169* 1 x FEP tube 4/2-20 mm infusion.</p> <p>(3) 101 169* 1 x FEP tube 4/2-170 mm infusion Americano</p> <p>(4) 100 112 2 x O-ring \varnothing4.47x1.78</p> <p>(5) 105 163 1 x FEP tube \varnothing4/2 - Top piston brew
Note: precut.</p> <p>(6) 100 281 2 x O-ring \varnothing3.69x1.78</p> <p>(7) 100 977 2 x Hose clamp \varnothing10
Note: in case of loss.</p> | <p>(8) 100 998 1 x Retaining ring \varnothing5-6
Note: in case of loss.</p> <p>(9) 100 524 2 x O-ring \varnothing15.6x1.78</p> <p>(10) 104 719* 1 x Sil. hose 9/3-250 mm By-pass.</p> <p>(11) 100 948 1 x Cover for top bearing unit</p> <p>(12) 101 285 2 x Cable tie 2.5x80 mm, black</p> <p>(13) 1 x 102 614/A - Kit SAV - Fitting top piston rod</p> <p>(14) 1 x 102 262/E - Coffee outlet hoses kit</p> |
|---|---|

1.2.1 102 614/A - Kit SAV - Fitting top piston rod

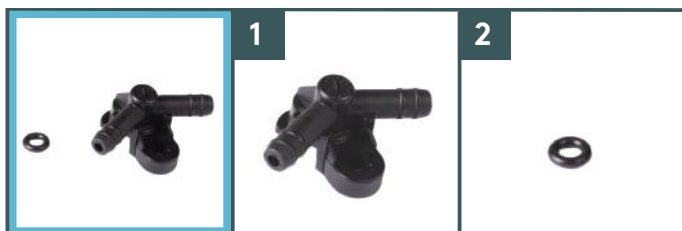


Fig. 1-2: 102 614

- | | |
|---|---|
| <p>(1) N/A 1 x Fitting top piston rod</p> | <p>(2) 100 281 1 x O-ring \varnothing3.69x1.78</p> |
|---|---|

1.2.2 102 262/E - Coffee outlet hoses kit

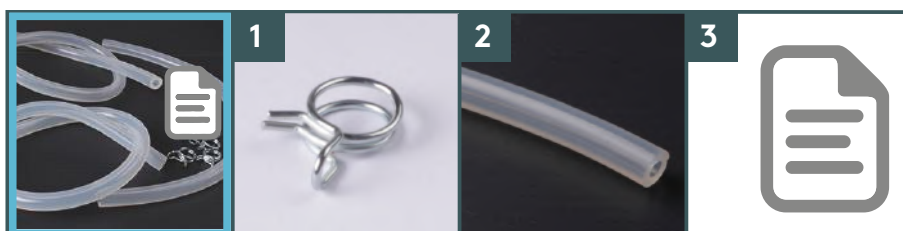


Fig. 1-3: 102 262

- | | |
|---|--|
| <p>(1) 100 977 3 x Hose clamp \varnothing10</p> <p>(2) 104 722 1 x Sil. braided hose 8/3-1m cutted</p> | <p>(3) 102 263 1 x Assembly instruction
Click here to open document.</p> |
|---|--|

1.2.3 Brew module overview

REF 102 400

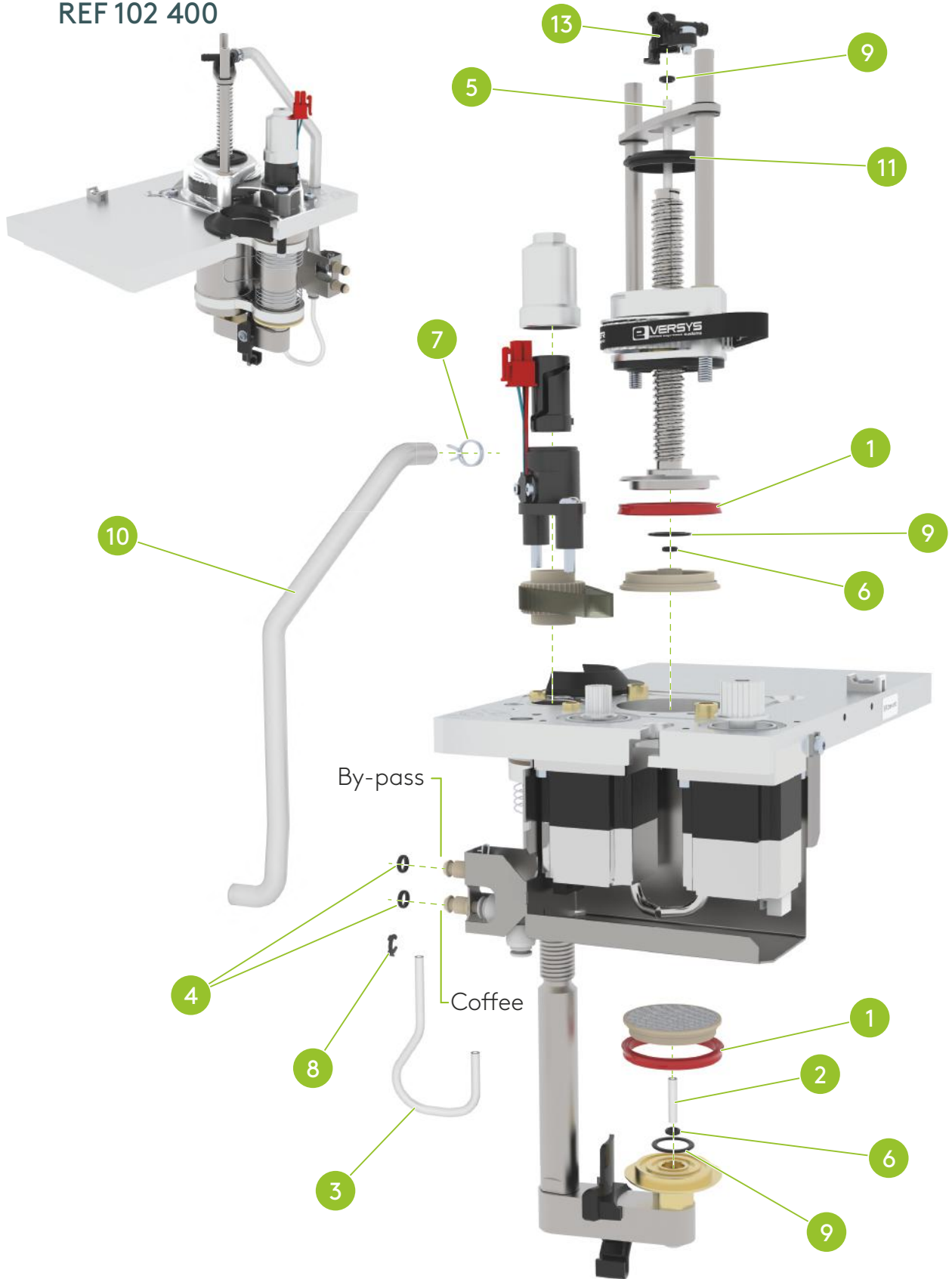


Fig. 1-4: Brew module overview

1 PM kits



1.3 102 826 Grinder PM kit



Fig. 1-5: 102 826

(1) 100 255 4 x Rubber mount \varnothing 25 mm



1.3.1 Grinder module overview

REF 100 150



Fig. 1-6: Grinder module overview

1.4 104 983 Everfoam V2 PM kit



Fig. 1-7: 104 983

(1) 100 114 1 x O-ring $\varnothing 10.28 \times 1.78$ EPDM

(4)

1 x 104 213/D - Kit SAV Check Valve $\varnothing 6/6$

(2) 102 905 1 x Flat seal steam nozzle

(3) 102 932 1 x Steam nozzle 4 holes cpl.

1.4.1 104 213/D - Kit SAV Check Valve $\varnothing 6/6$



Fig. 1-8: 104 213

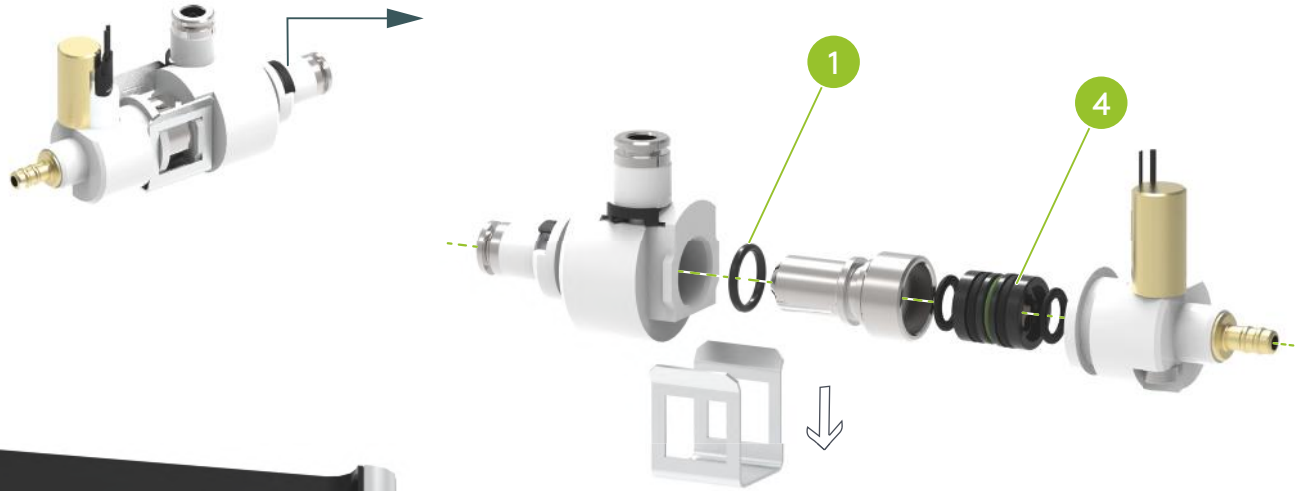
(1) N/A 1 x Standard check valve insert

Important: Only use the new check valves with a green o-ring.



1.4.2 Everfoam overview

REF 103 467



(See 1.8.3 page 25)

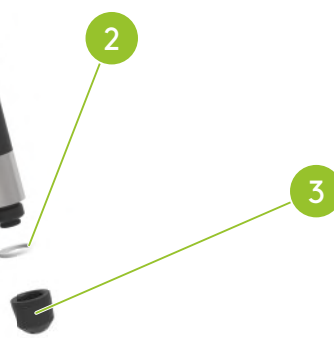


Fig. 1-9: Everfoam overview

1 PM kits



1.5 102 824 PM Kit Milk

1.5.1 103 132 Service Kit Milk - base

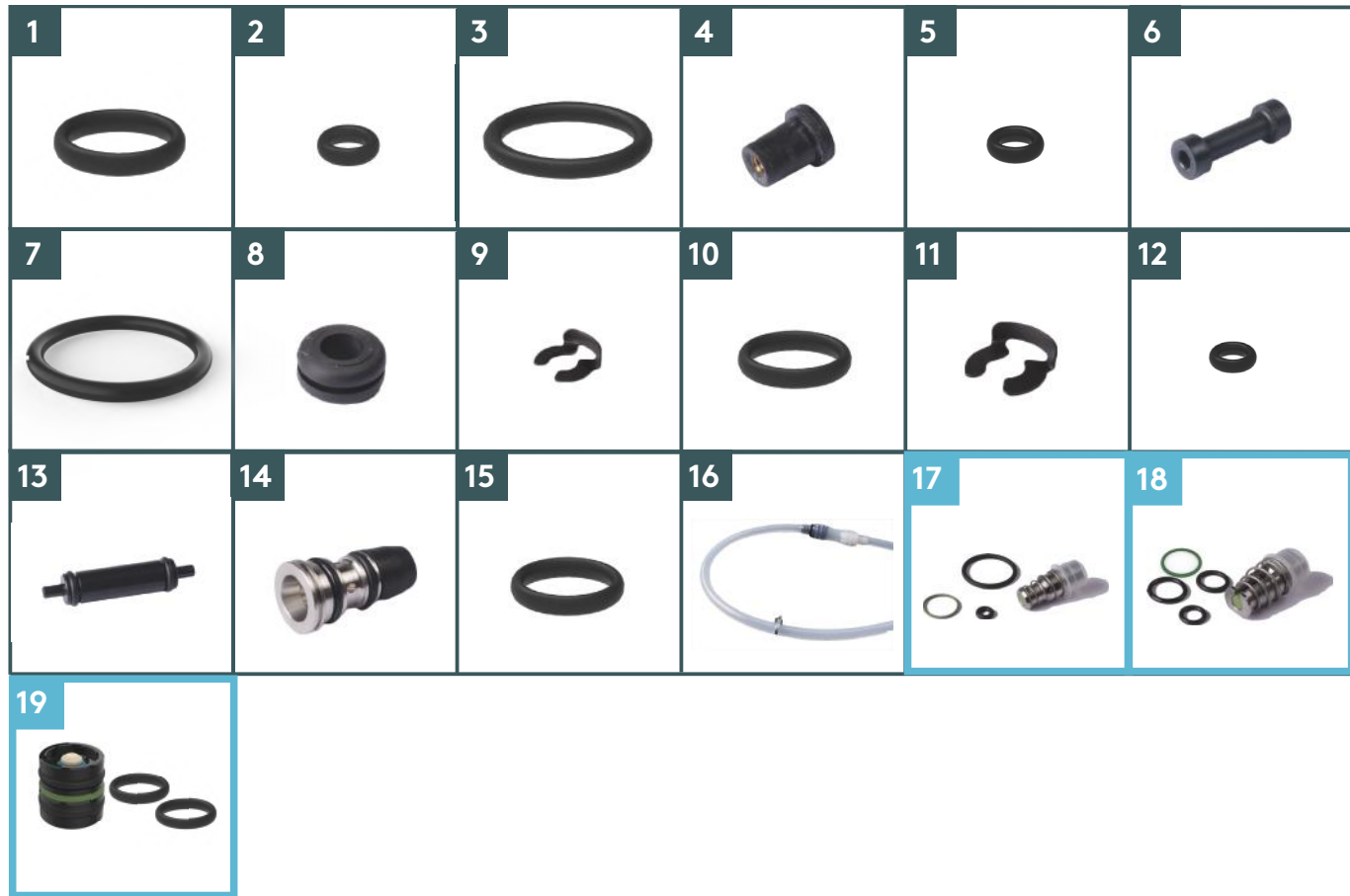


Fig. 1-10: 105 233

- | | | | | | |
|---------------------|-----|-------------------------|---------------------|-----|---|
| (1) 100 066 | 2 x | O-Ring ø8.73x1.78 EPDM | (11) 101 683 | 1 x | Circlips for shaft ø10-12 |
| (2) 100 112 | 5 x | O-Ring ø4.47x1.78 EPDM | (12) 101 693 | 1 x | O-ring ø2.5x1 |
| (3) 100 114 | 2 x | O-ring ø10.82x1.78 EPDM | (13) 101 911 | 1 x | Spacer milk detection cpl. |
| (4) 100 237 | 1 x | Fastener Flex-Loc M4 | (14) 101 939 | 1 x | Adapter check valve Cpl. |
| (5) 100 281 | 1 x | O-ring ø3.69x1.78 EPDM | (15) 104 716 | 3 x | O-ring ø5x1.5 |
| (6) 100 863 | 2 x | Hose pinch valve | (16) 101 999 | 1 x | Hose milk outlet left, assy. |
| (7) 101 357 | 2 x | O-ring ø20.29x2.62 | (17) | 3 x | 102 865 Kit SAV solenoid valve 25mm - ODE |
| (8) 101 392 | 2 x | Wire grommet ø10/7 | (18) | 1 x | 102 867 Kit SAV valve 32mm - ODE |
| (9) 101 666 | 1 x | Circlip for shaft ø7-8 | (19) | 1 x | 104 213/D - Kit SAV Check Valve ø6/6 |
| (10) 101 667 | 5 x | O-ring ø7.65x1.78 | | | |

1.5.2 Milk module overview

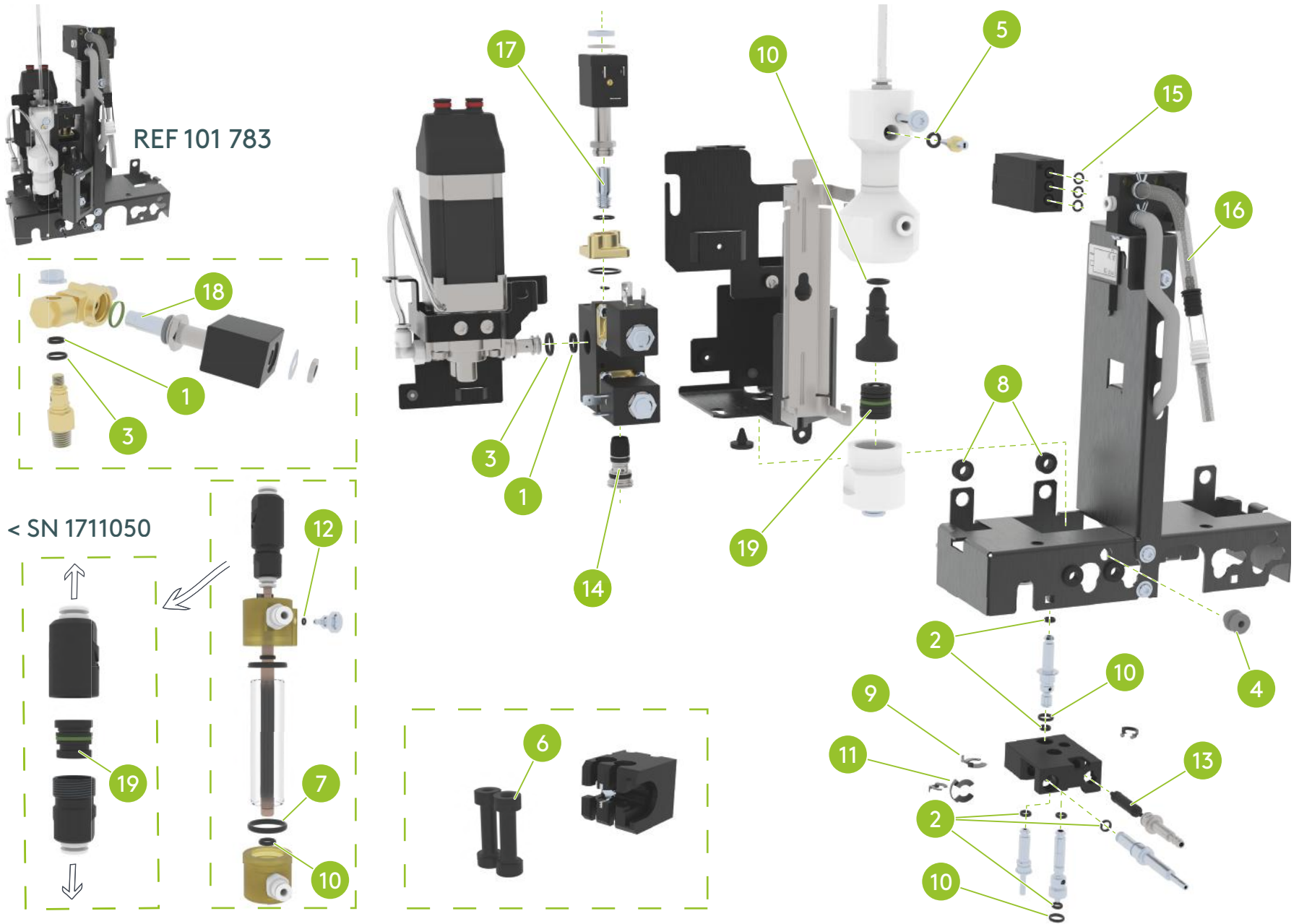


Fig. 1-11: Milk module overview

1.5.3 102 865 Kit SAV solenoid valve 25mm - ODE

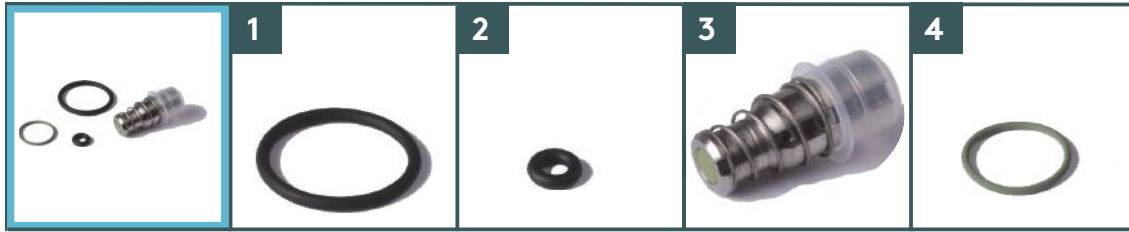


Fig. 1-12: 102 865

- | | | | | | |
|-------------|-----|---|-------------|-----|----------------------------------|
| (1) 100 217 | 1 x | O-ring $\varnothing 17.17 \times 1.78$ EPDM | (3) 102 917 | 1 x | Plunger for 25mm valve - ODE |
| (2) 102 167 | 1 x | O-ring $\varnothing 2.9 \times 1.78$ | (4) 102 921 | 1 x | O-ring $\varnothing 11 \times 1$ |

1.5.4 102 867 Kit SAV valve 32mm - ODE

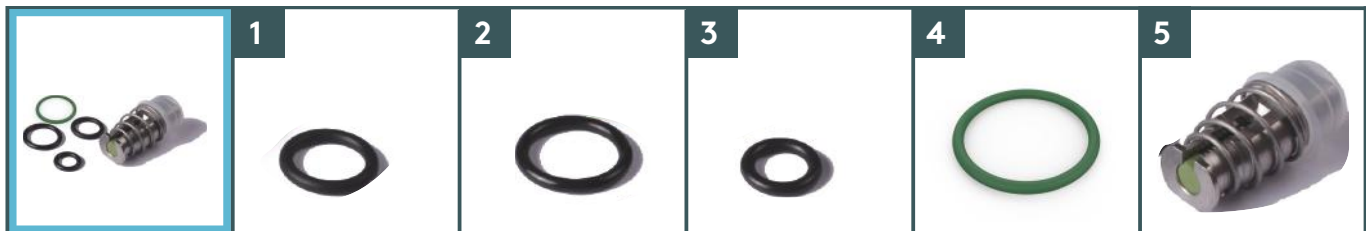


Fig. 1-13: 102 867

- | | | | | | |
|-------------|-----|---|-------------|-----|--|
| (1) 100 066 | 1 x | O-Ring $\varnothing 8.73 \times 1.78$ | (4) 101 097 | 1 x | O-ring $\varnothing 17 \times 1.5$ FPM |
| (2) 100 114 | 1 x | O-ring $\varnothing 10.82 \times 1.78$ EPDM | (5) 102 923 | 1 x | Plunger for valve 32mm - ODE |
| (3) 100 242 | 2 x | O-ring $\varnothing 6.07 \times 1.78$ EPDM | | | |

1.5.5 104 213 / D - Kit SAV Check Valve $\varnothing 6/6$



Fig. 1-14: 104 213

- | | | |
|---------|-----|-----------------------------|
| (1) N/A | 1 x | Standard check valve insert |
|---------|-----|-----------------------------|

Important: Only use check valves with a green o-ring.



PAGE INTENTIONALLY LEFT BLANK

1.6 102 822 Service Kit Hydraulic - ODE

1.6.1 103 129 Service Kit Hydraulic - base



Fig. 1-15: 103 129

- | | |
|---|--|
| (1) 100 066 2 x O-Ring \varnothing 8.73x1.78 EPDM | (11) 100 300 1 x Flat seal M5 |
| (2) 100 112 3 x O-Ring \varnothing 4.47x1.78 EPDM | (12) 100 637 1 x Check valve set assy. |
| (3) 100 114 2 x O-ring \varnothing 10.82x1.78 EPDM | (13) 1 x 100 638 Set plunger expansion valve, assy |
| (4) 100 204 1 x Helix flowmeter | (14) 100 407 1 x Phase wire connection |
| (5) 100 208 1 x O-ring \varnothing 28.3x1.78 EPDM | (15) 100 236 2 x Safety thermostat 125 \pm 3 $^{\circ}$ C |
| (6) 100 211 1 x Tubular filter | (16) 100 408 1 x Neutral wire connection |
| (7) 100 217 1 x O-ring \varnothing 17.17x1.78 EPDM | (17) 1 x 102 862 - Serv. Kit - Drain tube Hydraulic |
| (8) 100 235 1 x O-ring \varnothing 72.69x2.62 EPDM | (18) 2 x 102 865 Kit SAV solenoid valve 25mm - ODE |
| (9) 100 242 2 x O-ring \varnothing 6.07x1.78 EPDM | (19) 1 x 102 867 Kit SAV valve 32mm - ODE |
| (10) 100 281 4 x O-ring \varnothing 3.69x1.78 EPDM | |

1.6.1.1 102 862 - Serv. Kit - Drain tube Hydraulic

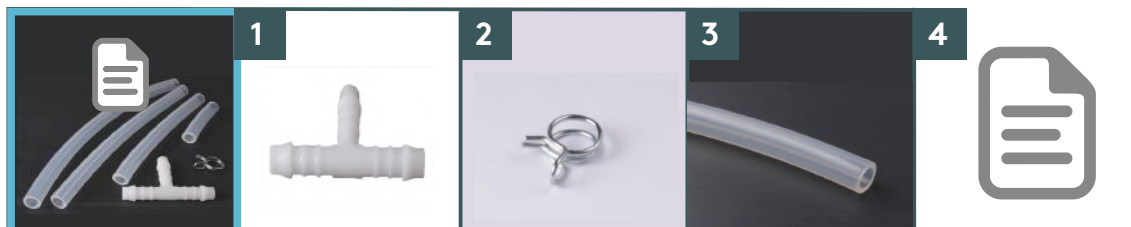


Fig. 1-16: 102 862

- | | |
|--|--|
| (1) 100 410 1 x T-Connector for hose di=7mm | (3) 104 451 1 x Sil. hose grey 11/7-365mm |
| (2) 100 429 1 x Hose clip \varnothing 12 | (4) 102 863 1 x Kit Assembly Instruction |
| | Click here to open document. |



1.6.1.2 100 638 Set plunger expansion valve, assy



Fig. 1-17: 100 638

(1) 100 214 1 x Spring security valve

(2) 103 275 1 x ODE set plunger expansion valve

1.6.2 Hydraulic module overview

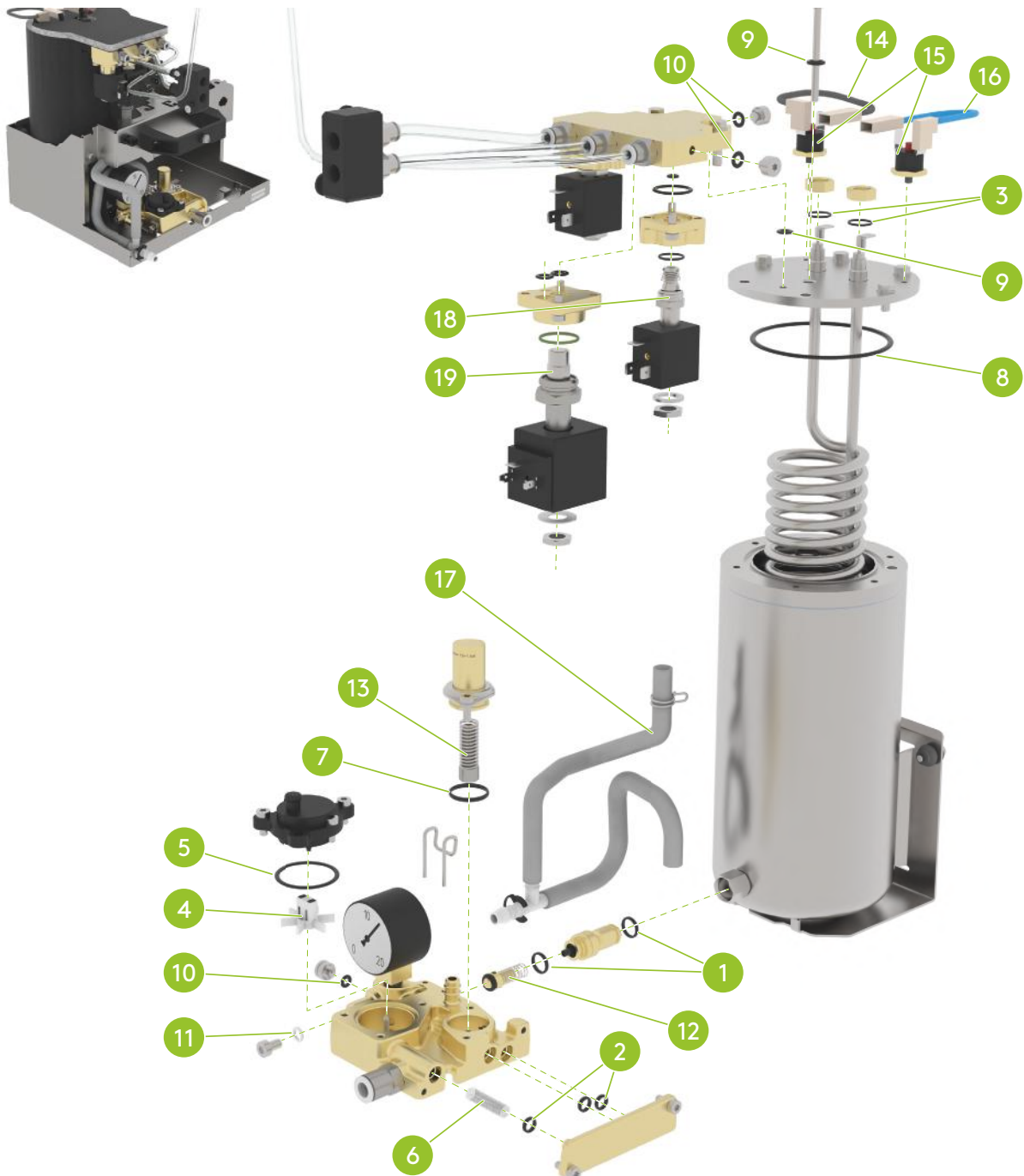


Fig. 1-18: Hydraulic module overview

1.6.3 102 865 Kit SAV solenoid valve 25mm - ODE

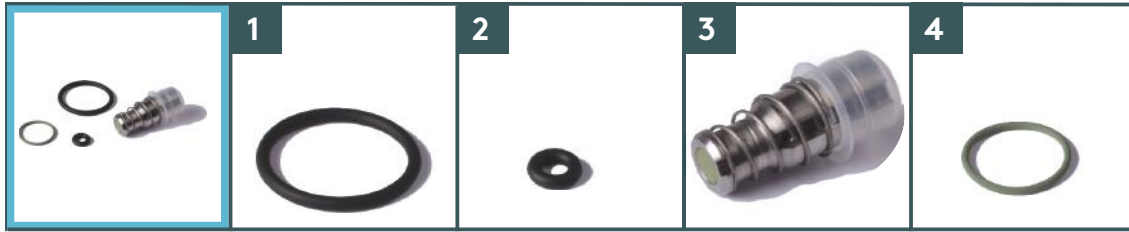


Fig. 1-19: 102 865

- | | | | | | |
|--------------------|-----|---|--------------------|-----|----------------------------------|
| (1) 100 217 | 1 x | O-ring $\varnothing 17.17 \times 1.78$ EPDM | (3) 102 917 | 1 x | Plunger for 25mm valve - ODE |
| (2) 102 167 | 1 x | O-ring $\varnothing 2.9 \times 1.78$ | (4) 102 921 | 1 x | O-ring $\varnothing 11 \times 1$ |

Note: 100 217 and 102 167 are not used in the hydraulic PM kit.

1.6.4 102 867 Kit SAV valve 32mm - ODE

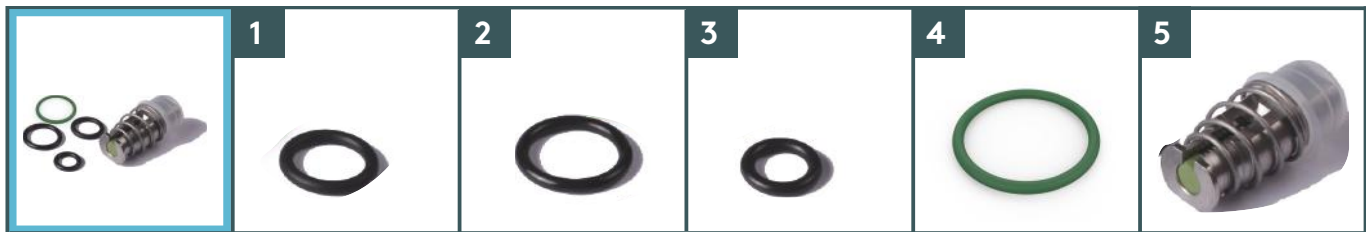


Fig. 1-20: 102 867

- | | | | | | |
|--------------------|-----|---|--------------------|-----|--|
| (1) 100 066 | 1 x | O-Ring $\varnothing 8.73 \times 1.78$ | (4) 101 097 | 1 x | O-ring $\varnothing 17 \times 1.5$ FPM |
| (2) 100 114 | 1 x | O-ring $\varnothing 10.82 \times 1.78$ EPDM | (5) 102 923 | 1 x | Plunger for valve 32mm - ODE |
| (3) 100 242 | 2 x | O-ring $\varnothing 6.07 \times 1.78$ EPDM | | | |



PAGE INTENTIONALLY LEFT BLANK

1.7 102 823 PM kit steam

1.7.1 103 135 Service Kit Steam - base



Fig. 1-21: 103 135

- | | |
|---|--|
| (1) 100 066 5 x O-Ring \varnothing 8.73x1.78 | (9) 100 281 1 x O-ring \varnothing 3.69x1.78 EPDM |
| (2) 100 103 3 x Nut M6 with flange | (10) 100 407 2 x Phase wire connection |
| (3) 100 114 2 x O-ring \varnothing 10.82x1.78 EPDM | (11) 103 739 4 x Safety thermostat $130\pm 3^{\circ}\text{C}$ |
| (4) 100 211 2 x Tubular filter | (12) 100 408 2 x Neutral wire connection |
| (5) 100 364 1 x O-ring \varnothing 55.56x3.53 | (13) 1 x 102 412/A - Kit SAV safety valve steam unit |
| (6) 100 410 3 x T Connector for hose di=7 mm | (14) 5 x 102 865 Kit SAV solenoid valve 25mm - ODE |
| (7) 100 544 2 x Teflon sleeve level/safety probe | (15) 1 x 102 867 Kit SAV valve 32mm - ODE |
| (8) 100 621* 1x Elbow fitting \varnothing 6 mm - 1/4"K | |

Note: *100 621 stick and change only if full of limestone.

1.7.2 102 412/A - Kit SAV safety valve steam unit



Fig. 1-22: 102 412

- | | |
|--|--|
| (1) 100 524 1 x O-ring \varnothing 15.6x1.78 EPDM | (3) 100 780 1 x Plunger safety valve, assy. |
| (2) 100 566 1 x Spring safety valve steam unit | |

1.7.3 Steam module overview

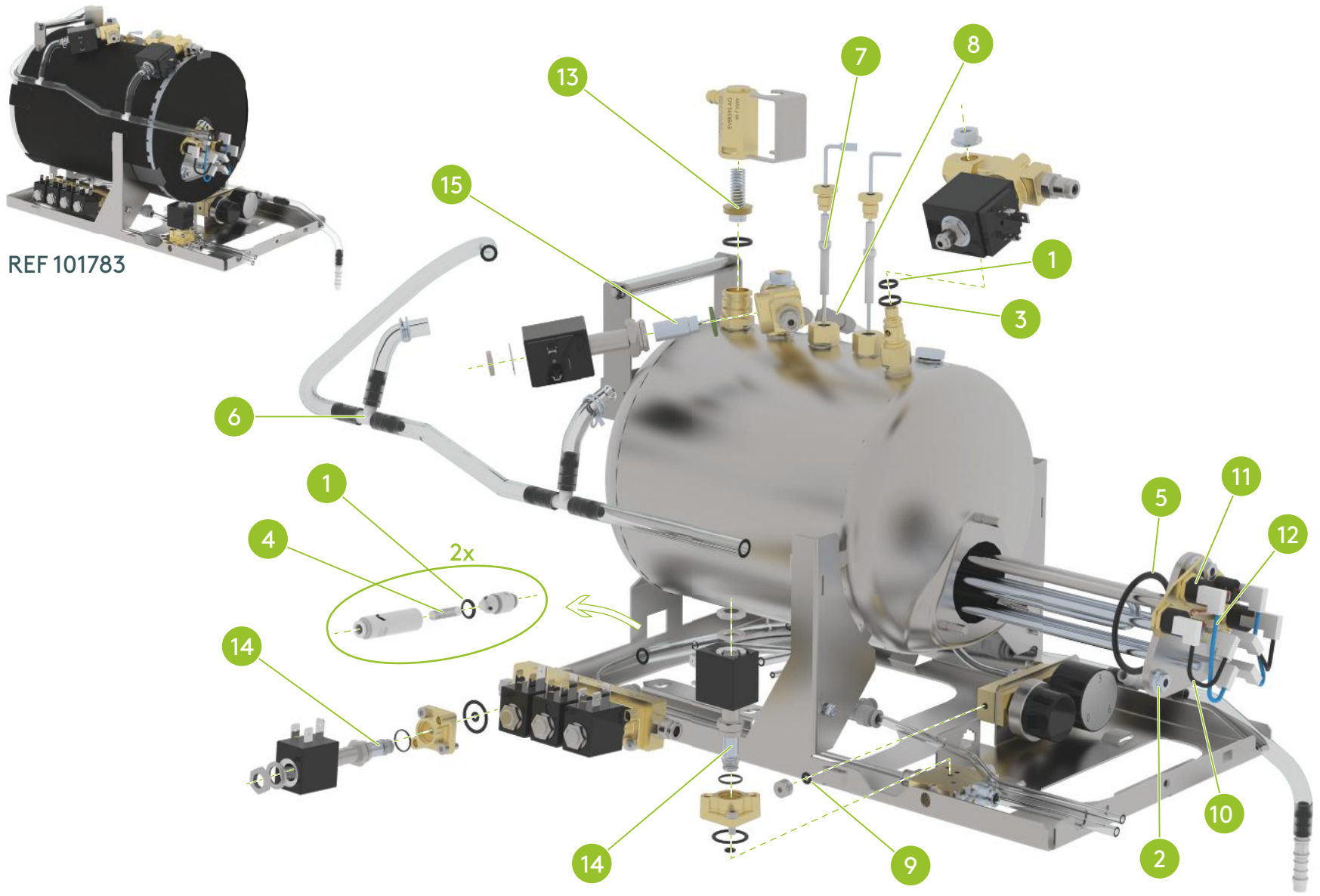


Fig. 1-23: Steam module overview

1.7.4 102 865 Kit SAV solenoid valve 25mm - ODE

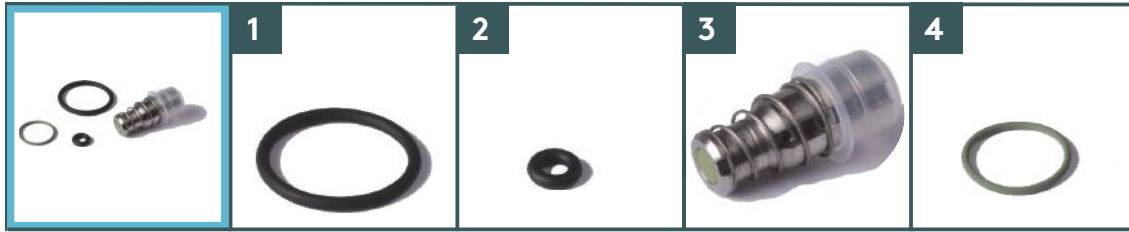


Fig. 1-24: 102 865

(1) 100 217 1 x O-ring \varnothing 17.17x1.78 EPDM

(3) 102 917 1 x Plunger for 25mm valve - ODE

(2) 102 167 1 x O-ring \varnothing 2.9x1.78

(4) 102 921 1 x O-ring \varnothing 11x1

1.7.5 102 867 Kit SAV valve 32mm - ODE

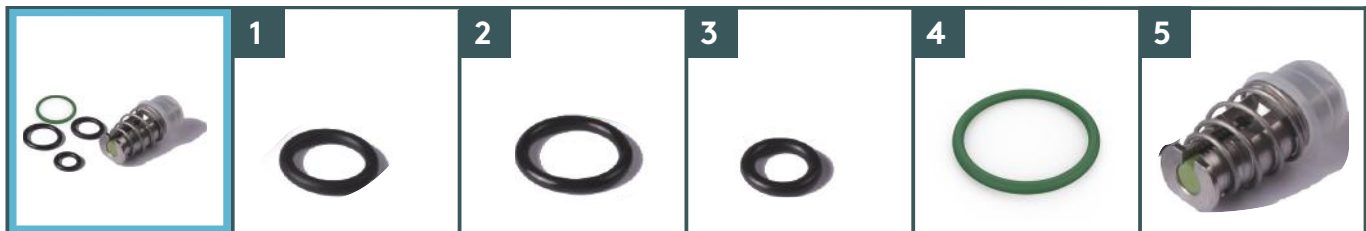


Fig. 1-25: 102 867

(1) 100 066 1 x O-Ring \varnothing 8.73x1.78

(4) 101 097 1 x O-ring \varnothing 17x1.5 FPM

(2) 100 114 1 x O-ring \varnothing 10.82x1.78 EPDM

(5) 102 923 1 x Plunger for valve 32mm - ODE

(3) 100 242 2 x O-ring \varnothing 6.07x1.78 EPDM



PAGE INTENTIONALLY LEFT BLANK

1 PM kits



1.8 102 825 Service Kit Frame - ODE

1.8.1 103 138 Service Kit Frame - base



Fig. 1-26: *Ordering cut to 1 m.

- | | |
|--|--|
| <p>(1) 100 112 4 x O-ring ϕ4.47x1.78</p> <p>(2) 100 702 1 x Seal flat ϕ15xϕ11x1.5</p> <p>(3) 100 712 1 x O-ring ϕ14x1.78 EPDM</p> <p>(4) 100 762 1 x Aerator</p> <p>(5) 100 977 2 x Hose clamp ϕ10 mm
Note: in case of loss.</p> | <p>(6) 104 451* 1 x Sil. hose grey 11/7-340 mm chassis
Note: Not visible on frame overview figure.</p> <p>(7) 100 414* 1 x Sil. hose 11/7-710 mm chassis
Note: Not visible on frame overview figure.</p> <p>(8) 1 x <i>106 732 Kit SAV valve 32mm water inlet ODE</i></p> |
|--|--|

1.8.2 106 732 Kit SAV valve 32mm water inlet ODE



Fig. 1-27: 106 732

- | | |
|--|--|
| <p>(1) 101 097 1 x O-ring ϕ17x1.5 FPM</p> | <p>(2) 103 994 1 x Plunger water entry valve (ϕ4.5) - ODE</p> |
|--|--|

1.8.3 Frame overview



Fig. 1-28: Frame overview



PAGE INTENTIONALLY LEFT BLANK

Index

100 000

100 059	6
100 066	12, 14, 16, 18, 20, 22
100 103	20
100 112	6, 12, 16, 24
100 114	10, 12, 14, 16, 18, 20, 22
100 204	16
100 208	16
100 211	16, 20
100 214	17
100 217	14, 16, 18, 22
100 235	16
100 236	16
100 237	12
100 242	14, 16, 18, 22
100 255	8
100 281	6, 12, 16, 20
100 300	16
100 364	20
100 407	16, 20
100 408	16, 20
100 410	16, 20
100 429	16
100 524	6, 20
100 544	20
100 566	20
100 637	16
100 638	17
100 702	24
100 712	24
100 762	24
100 780	20
100 863	12
100 948	6

100 977	6, 24
100 998	6

101 000

101 097	14, 18, 22, 24
101 169	6
101 285	6
101 357	12
101 392	12
101 666	12
101 667	10, 12, 14
101 683	12
101 693	12
101 911	12
101 939	12
101 999	12

102 000

102 167	14, 18, 22
102 262	6
102 263	6
102 412	20
102 821	5
102 822	5
102 823	5
102 824	5
102 825	5
102 826	5
102 862	16
102 863	16
102 865	14, 18, 22
102 867	14, 18, 22

Index



102 905	10
102 917	14, 18, 22
102 921	14, 18, 22
102 923	14, 18, 22
102 932	10
102 940	5
102 941	5
102 942	5
102 943	5
102 944	5
102 945	5
102 946	5

103 000

103 083	5
103 084	5
103 085	5
103 086	5
103 087	5
103 088	5
103 089	5
103 095	5
103 096	5
103 275	17
103 739	20
103 994	24

104 000

104 213	10, 14
104 414	24
104 451	16, 24
104 716	12
104 719	6
104 722	6
104 983	5

105 000

105 163	6
100 621	20
106 732	24

Notes

A series of horizontal dotted lines for writing notes.



Eversys AG
Rue du Biais 19
1957 Ardon - Switzerland
+41 27 305 25 50

www.cameo-espresso.com
www.eversys.com
sales@eversys.com
f g+ in



DISTRIBUTION

Eversys operates through a network of fully trained and reliable national and regional distributors. These partners provide a fully integrated service provision ranging from machine sales and servicing through to user training.

c'2 Cameo™, e'Connect™, e'Barista™, e'Foam™ and e'Clean™ are trademarked property of Eversys AG. This manual is designed for final user purpose only and information can be changed at any time without amending these instructions.