

Cameo

PM Kits

DOC 105 620 - 1.5 - 05/2019



Authentic
— TASTE & LINES —

Document

Cameo PM Kits

Version: 1.5 - 05/2019



105 620



Manufacturer

Eversys AG

Rue du Biaï 19

1957 Ardon VS

Switzerland

Tel.: +41 (0)27 305 25 50

email: cso@eversys.com

Hotline

email: hotline@eversys.com

Tel: [+41 27 588 00 1](tel:+4127588001)

Version	Soft	Date	Modification
1.0	N/A	07.05.18	First edition
1.1	N/A	30.05.18	Minor corrections
1.2	N/A	19.07.18	Minor corrections
1.3	N/A	12.12.18	Product name, brew PM kit, add navigation buttons.
1.4	N/A	06.02.19	Addition of o-ring 101097 for valves 102867 and 103994 (new water inlet valve kit); new kit 106731; 106731; check-valves (green o-rings) (104213).
1.5	N/A	07.05.19	Minor corrections

Copyright ©

The reproduction, even partially, of this document is forbidden. No part may be copied in any form, and it may not be used, edited nor transmitted by any electronic means (photocopy, photography, magnetic supports or other recording processes), without the written authorization of Eversys AG. All rights and particularly reproduction, translation, edition, distribution and also industrial property and recording are reserved.

Table of contents

1	PM kits.....	5
1.1	Complete service kit.....	5
1.1.1	12 months (1 x 50'000)	5
1.1.2	24 months (1 x 100'000)	5
1.2	105 462 Brew PM kit.....	6
1.2.1	102 614/A - Kit SAV - Fitting top piston rod.....	6
1.2.2	Brew module overview.....	7
1.3	102 826 Grinder PM kit	8
1.3.1	Grinder module overview.....	9
1.4	104 983 Everfoam V2 PM kit	10
1.4.1	104 213/C - Kit SAV Check Valve ø6/6	10
1.4.2	Everfoam overview.....	11
1.5	105 233 Milk module PM kit	12
1.5.1	104 213/C - Kit SAV Check Valve ø6/6	12
1.5.2	102 867 Kit SAV valve 32mm - ODE	12
1.5.3	Milk module overview	13
1.6	105 463 PM kit hydraulic.....	14
1.6.1	Hydraulic module overview	15
1.6.2	100 638 Set plunger expansion valve, assy	16
1.6.3	102 865 Kit SAV solenoid valve 25mm - ODE	16
1.6.4	104 213/C - Kit SAV Check Valve ø6/6	16
1.6.5	102 867 Kit SAV valve 32mm - ODE	16



1.7	105 464 PM kit steam	18
1.7.1	Steam module overview	19
1.7.2	102 865 Kit SAV solenoid valve 25mm - ODE	20
1.7.3	102 412/A - Kit SAV safety valve steam unit	20
1.7.4	102 867 Kit SAV valve 32mm - ODE	20
1.8	105 506 PM kit frame	22
1.8.1	106 732 Kit SAV valve 32mm water inlet ODE	22
1.8.2	Frame overview	23

PM kits 1

Chapter Overview

This chapter outlines the content of each preventive maintenance kit.

1.1 Complete service kit

1.1.1 12 months (1 x 50'000)

		c'2ct	c'2	c'2m
	Service KIT	105 456	105 458	105 460
105 506	Frame <i>(See 1.8 page 22)</i>	1	1	1
105 462	Brew <i>(See 1.2 page 6)</i>	1	1	1
105 464	Steam <i>(See 1.7 page 18)</i>	-	1	1
104 983	Everfoam <i>(See 1.4 page 10)</i>	-	1	1
105 233	Milk <i>(See 1.5 page 12)</i>	-	-	1
102 826	Grinder <i>(See 1.3 page 8)</i>	-	-	-
105 463	Hydraulic <i>(See 1.6 page 14)</i>	-	-	-

1.1.2 24 months (1 x 100'000)

		c'2ct	c'2	c'2m
	Service KIT	105 457	105 459	105 461
105 506	Frame <i>(See 1.8 page 22)</i>	1	1	1
105 462	Brew <i>(See 1.2 page 6)</i>	1	1	1
105 464	Steam <i>(See 1.7 page 18)</i>	-	1	1
104 983	Everfoam <i>(See 1.4 page 10)</i>	-	1	1
105 233	Milk <i>(See 1.5 page 12)</i>	-	-	1
102 826	Grinder <i>(See 1.3 page 8)</i>	1	1	1
105 463	Hydraulic <i>(See 1.6 page 14)</i>	1	1	1

1.2 105 462 Brew PM kit



Fig. 1-1: 105 462

- | | |
|---|---|
| <p>(1) 100 112 3 x O-ring $\varnothing 4.47 \times 1.78$</p> <p>(2) 100 281 2 x O-ring $\varnothing 3.69 \times 1.78$</p> <p>(3) 100 977 2 x Hose clamp $\varnothing 10$
Note: in case of loss.</p> <p>(4) 100 998 2 x Retaining ring $\varnothing 5-6$
Note: in case of loss.</p> <p>(5) 101 169 1 x FEP tube 4/2-180 mm brew mini Coffee
Note: Ordering cutted 1 m.</p> | <p>(6) 101 169 1 x FEP tube 4/2-230 mm brew mini Americano
Note: Ordering cutted 1 m.</p> <p>(7) 104 719 1 x Sil. hose 9/3-345 mm By-pass C'2
Note: Ordering cutted 1 m.</p> <p>(8) 105 163 1 x FEP tube $\varnothing 4/2$ - Top piston brew
Note: precut.</p> <p>(9) 105 251 2 x O-ring adjusted K profile</p> <p>(10) 1 x 102 614/A - Kit SAV - Fitting top piston rod</p> |
|---|---|

1.2.1 102 614/A - Kit SAV - Fitting top piston rod



Fig. 1-2: 102 614

- | | |
|--|--|
| <p>(1) N/A 1 x Fitting top piston rod</p> | <p>(2) 100 281 1 x O-ring $\varnothing 3.69 \times 1.78$</p> |
|--|--|

1.2.2 Brew module overview

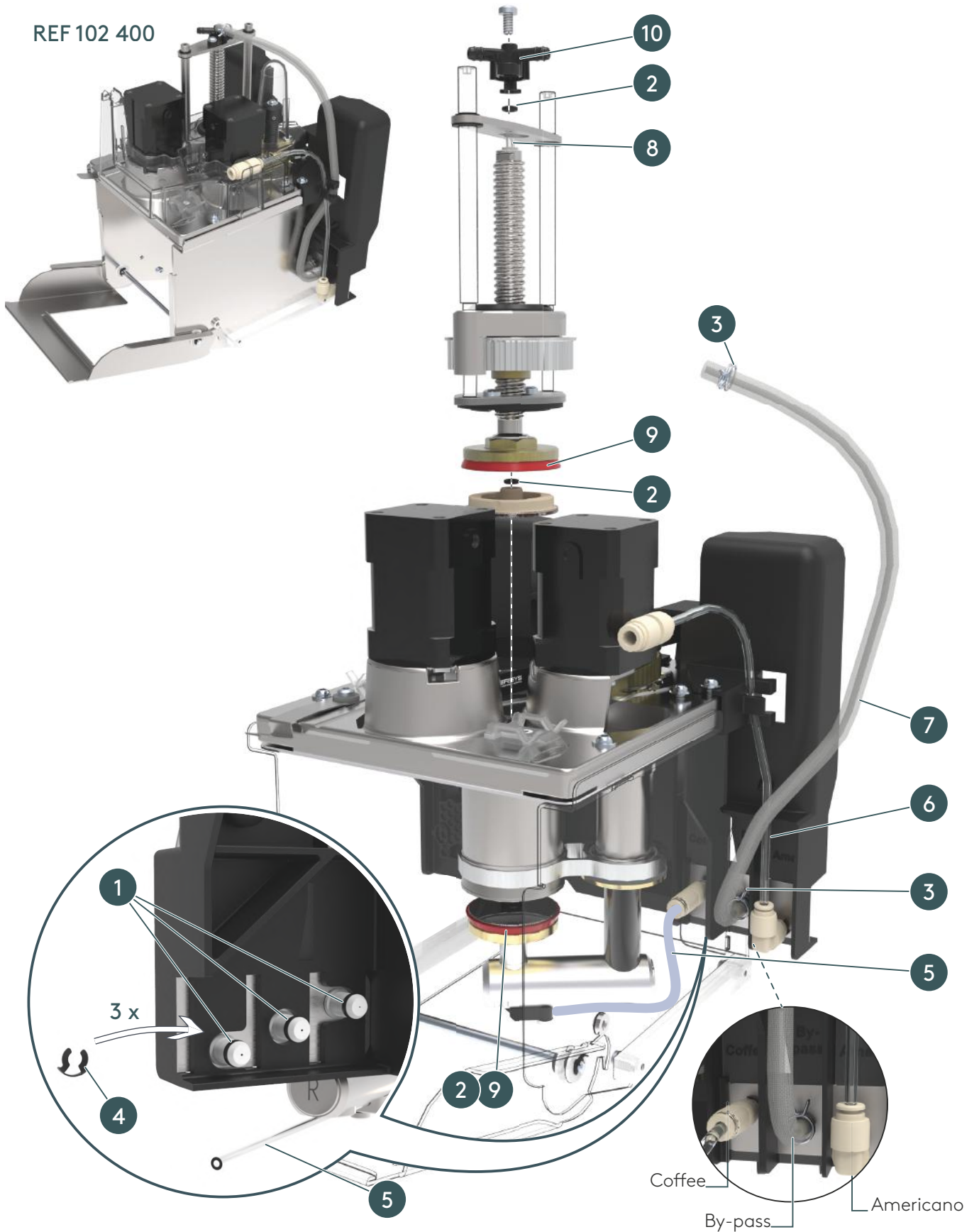


Fig. 1-3: Brew module overview

1 PM kits



1.3 102 826 Grinder PM kit



Fig. 1-4: 102 826

(1) 100 255 4 x Rubber mount \varnothing 25 mm



1.3.1 Grinder module overview

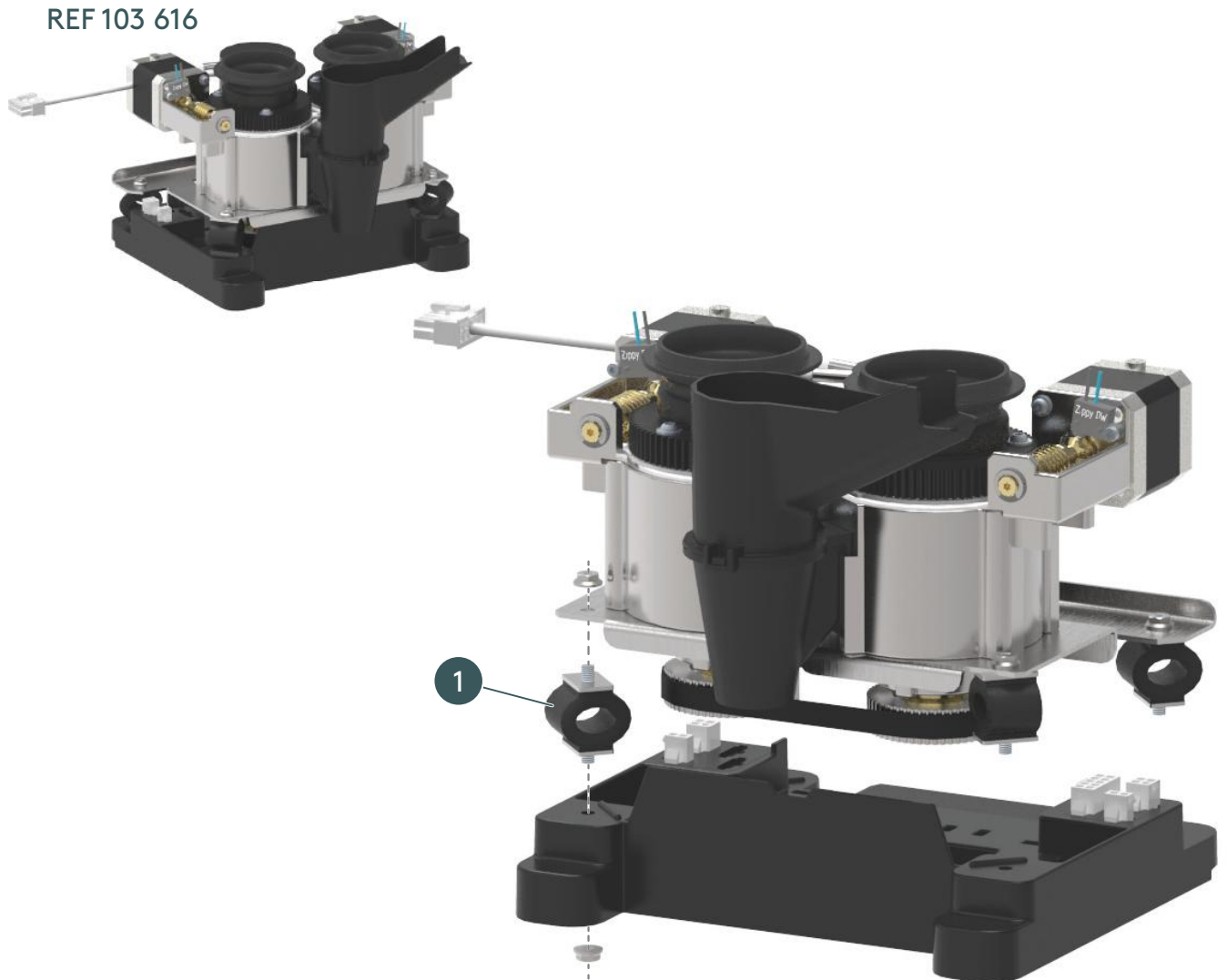


Fig. 1-5: Grinder module overview

1.4 104 983 Everfoam V2 PM kit



Fig. 1-6: 104 983

(1) 100 114 1 x O-ring $\varnothing 10.28 \times 1.78$ EPDM

(4)

1 x 104 213/D - Kit SAV Check Valve $\varnothing 6/6$

(2) 102 905 1 x Flat seal steam nozzle

(3) 102 932 1 x Steam nozzle 4 holes cpl.

1.4.1 104 213/D - Kit SAV Check Valve $\varnothing 6/6$



Fig. 1-7: 104 213

(1) N/A 1 x Standard check valve insert

Important: Only use check valves with a green o-ring.



1.4.2 Everfoam overview

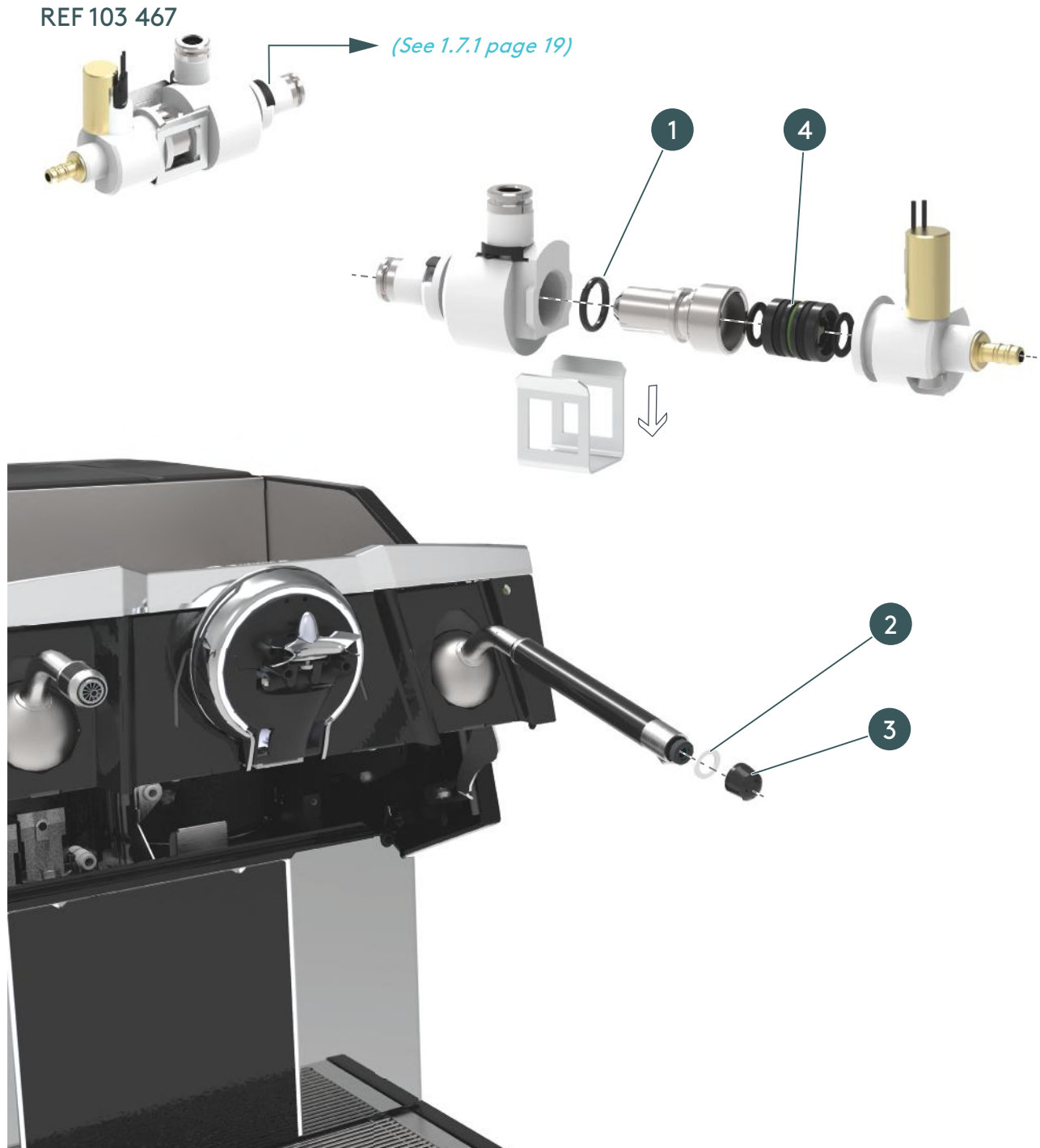


Fig. 1-8: Everfoam overview

1.5 105 233 Milk module PM kit

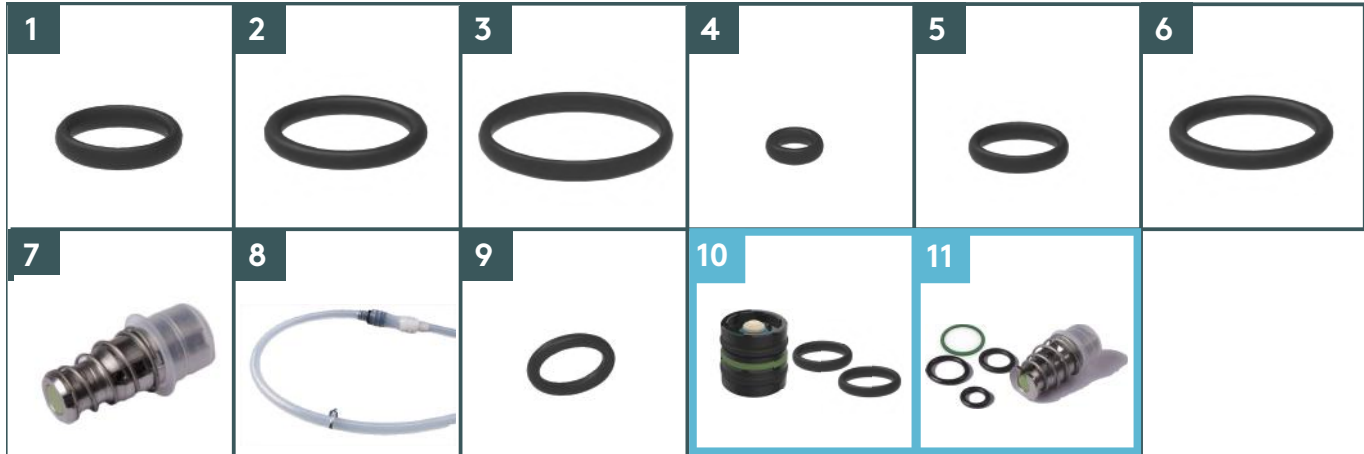


Fig. 1-9: 105 233

- | | |
|--|--|
| <p>(1) 100 112 14 x O-Ring ϕ8.73x1.78</p> <p>(2) 100 114 1 x O-ring ϕ10.82x1.78 EPDM</p> <p>(3) 100 217 1 x O-ring ϕ17.17x1.78 EPDM</p> <p>(4) 100 281 2 x O-ring ϕ3.69x1.78 EPDM</p> <p>(5) 101 667 1 x O-ring ϕ7.65x1.78 EPDM</p> <p>(6) 106 511 2 x O-ring ϕ10x2 EPDM</p> | <p>(7) 102 917 2x Plunger for 25 mm valve - ODE</p> <p>(8) N/A 1x Hose milk outlet ass.
Note: access coffee outlet.</p> <p>(9) 104 716 3 x O-ring ϕ5.0x1.5</p> <p>(10) 4 x 104 213/D - Kit SAV Check Valve ϕ6/6
Note: one extra (cold foam option)</p> <p>(11) 1 x 102 867 Kit SAV valve 32mm - ODE</p> |
|--|--|

1.5.1 104 213/D - Kit SAV Check Valve ϕ 6/6



Fig. 1-10: 104 213

- (1)** N/A 1 x Standard check valve insert

1.5.2 102 867 Kit SAV valve 32mm - ODE



Fig. 1-11: 102 867

- | | |
|--|---|
| <p>(1) 100 066 1 x O-Ring ϕ8.73x1.78</p> <p>(2) 100 114 1 x O-ring ϕ10.82x1.78 EPDM</p> <p>(3) 100 242 2 x O-ring ϕ6.07x1.78 EPDM</p> | <p>(4) 101 097 1 x O-ring ϕ17x1.5 FPM</p> <p>(5) 102 923 1 x Plunger for valve 32mm - ODE</p> |
|--|---|

1.5.3 Milk module overview

REF 103 592

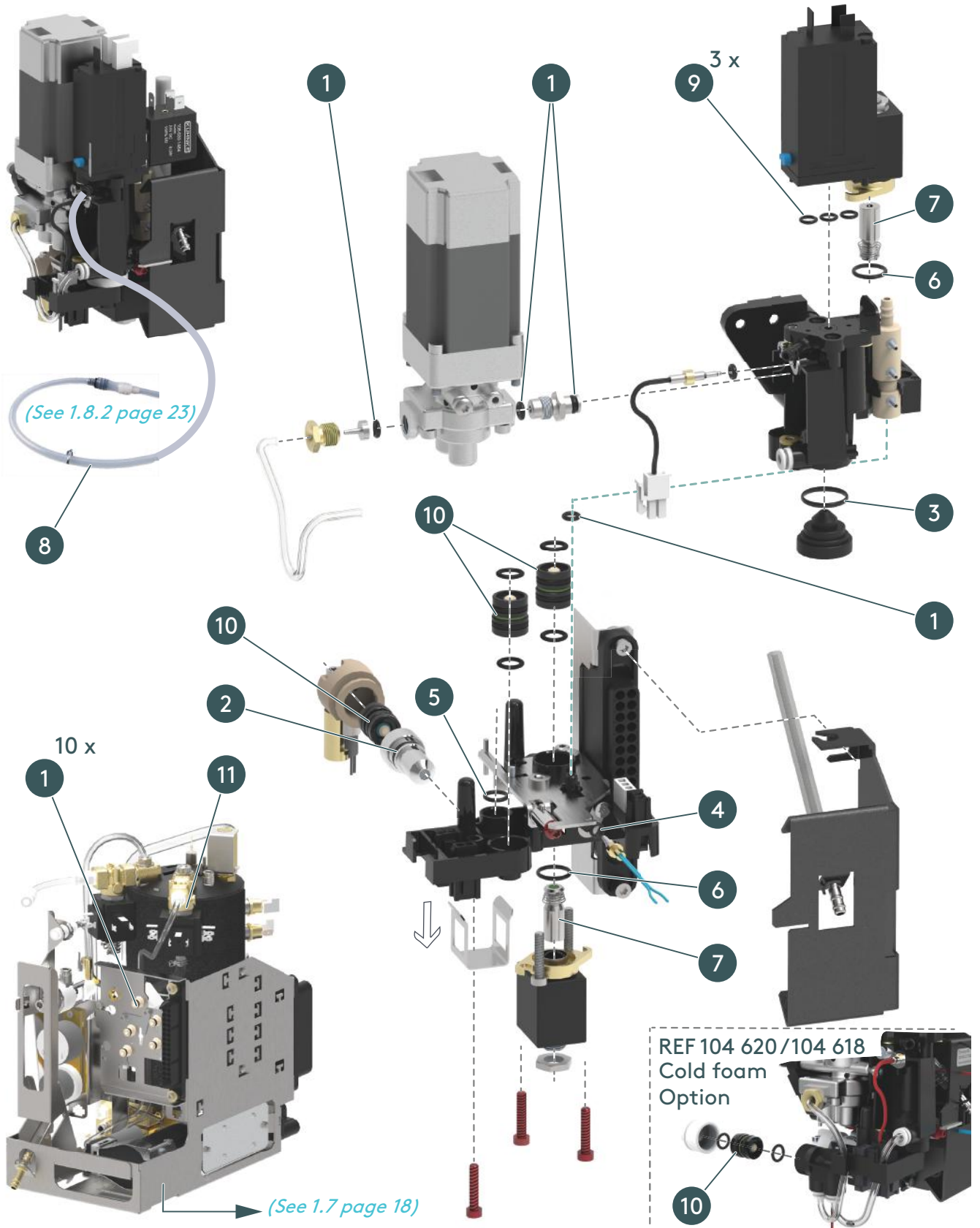


Fig. 1-12: Milk module overview

1.6 105 463 PM kit hydraulic



Fig. 1-13: 105 463

- (1)** 100 066 3 x O-Ring $\varnothing 8.73 \times 1.78$
- (2)** 100 114 2 x O-ring $\varnothing 10.82 \times 1.78$ EPDM
- (3)** 100 211 1 x Tubular filter
- (4)** 100 217 1 x O-ring $\varnothing 17.17 \times 1.78$ EPDM
- (5)** 100 242 1 x O-ring $\varnothing 6.07 \times 1.78$ EPDM
- (6)** 100 281 2 x O-ring $\varnothing 3.69 \times 1.78$ EPDM

- (7)** 102 589 1 x O-ring $\varnothing 6.75 \times 1.78$ EPDM
- (8)** 1 x [100 638 Set plunger expansion valve, assy](#)
- (9)** 2 x [102 865 Kit SAV solenoid valve 25mm - ODE](#)
- (10)** 1 x [104 213/D - Kit SAV Check Valve \$\varnothing 6/6\$](#)
- (11)** 1 x [102 867 Kit SAV valve 32mm - ODE](#)

1.6.1 Hydraulic module overview

REF 103 591

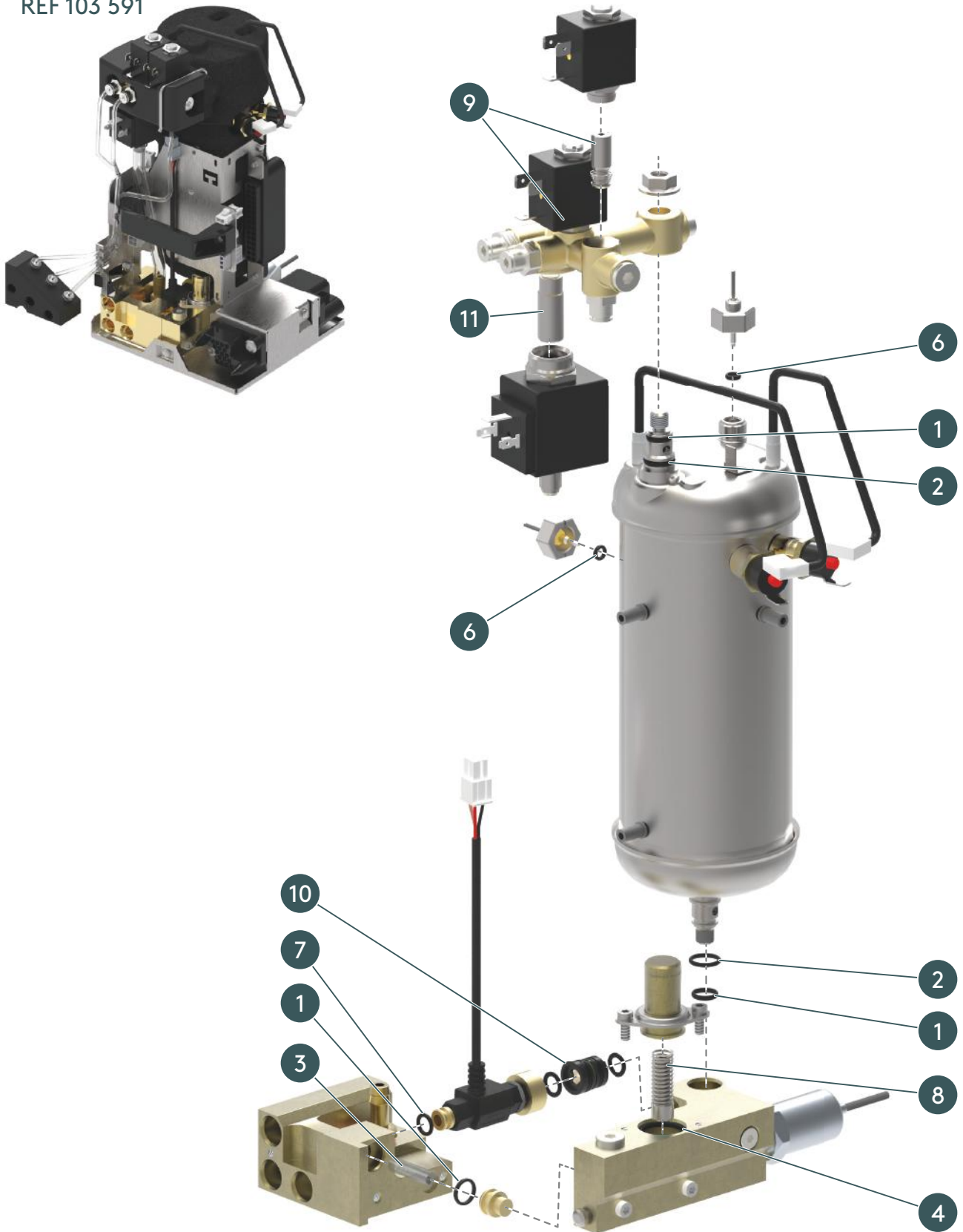


Fig. 1-14: Hydraulic module overview

1.6.2 100 638 Set plunger expansion valve, assy



Fig. 1-15: 100 638

(1) 100 214 1 x Spring security valve

(2) 103 275 1 x ODE set plunger expansion valve

1.6.3 102 865 Kit SAV solenoid valve 25mm - ODE



Fig. 1-16: 102 865

(1) 100 217 1 x O-ring ϕ 17.17x1.78 EPDM

(3) 102 917 1 x Plunger for 25mm valve - ODE

(2) 102 167 1 x O-ring ϕ 2.9x1.78

(4) 102 921 1 x O-ring ϕ 11x1

Note: 100 217 and 102 167 are not used in the hydraulic PM kit.

1.6.4 104 213 / D - Kit SAV Check Valve ϕ 6/6



Fig. 1-17: 104 213

(1) N/A 1 x Standard check valve insert

Important: Only use check valves with a green o-ring.

1.6.5 102 867 Kit SAV valve 32mm - ODE

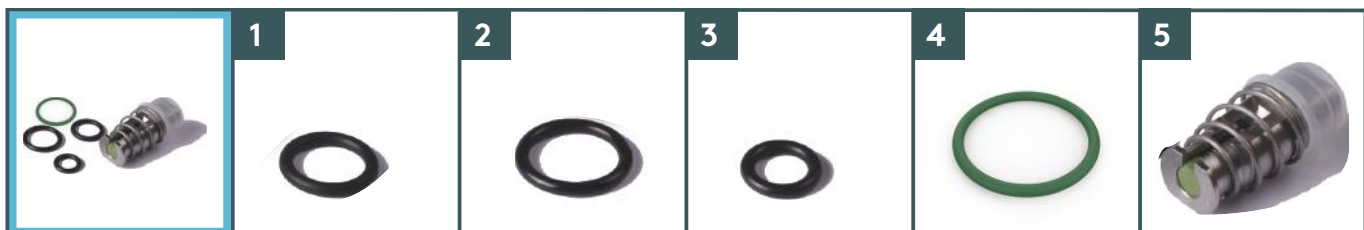


Fig. 1-18: 102 867

(1) 100 066 1 x O-Ring ϕ 8.73x1.78

(4) 101 097 1 x O-ring ϕ 17x1.5 FPM

(2) 100 114 1 x O-ring ϕ 10.82x1.78 EPDM

(5) 102 923 1 x Plunger for valve 32mm - ODE

(3) 100 242 2 x O-ring ϕ 6.07x1.78 EPDM



PAGE INTENTIONALLY LEFT BLANK

1.7 105 464 PM kit steam



Fig. 1-19: 105 464

- | | | | | | | | |
|------------|---------|-----|---|-------------|---------|-----|--|
| (1) | 100 066 | 7 x | O-Ring $\varnothing 8.73 \times 1.78$ | (8) | 106 727 | 1 x | O-ring $\varnothing 12 \times 1.5$ FPM |
| (2) | 100 112 | 1 x | O-ring $\varnothing 4.47 \times 1.78$ EPDM | (9) | 101 073 | 1 x | O-ring $\varnothing 3 \times 1.5$ FPM |
| (3) | 100 114 | 1 x | O-ring $\varnothing 10.82 \times 1.78$ EPDM | (10) | | 1 x | <i>102 412/A - Kit SAV safety valve steam unit</i> |
| (4) | 100 211 | 1 x | Tubular filter | (11) | | 4 x | <i>102 865 Kit SAV solenoid valve 25mm - ODE</i> |
| (5) | 100 281 | 1 x | O-ring $\varnothing 3.69 \times 1.78$ EPDM | (12) | | 1 x | <i>102 867 Kit SAV valve 32mm - ODE</i> |
| (6) | 100 524 | 1 x | O-ring $\varnothing 15.6 \times 1.78$ EPDM | | | | |
| (7) | 105 512 | 2x | O-ring $\varnothing 6 \times 1.5$ FKM | | | | |

1.7.1 Steam module overview

REF 104 664 (2 x heatings)

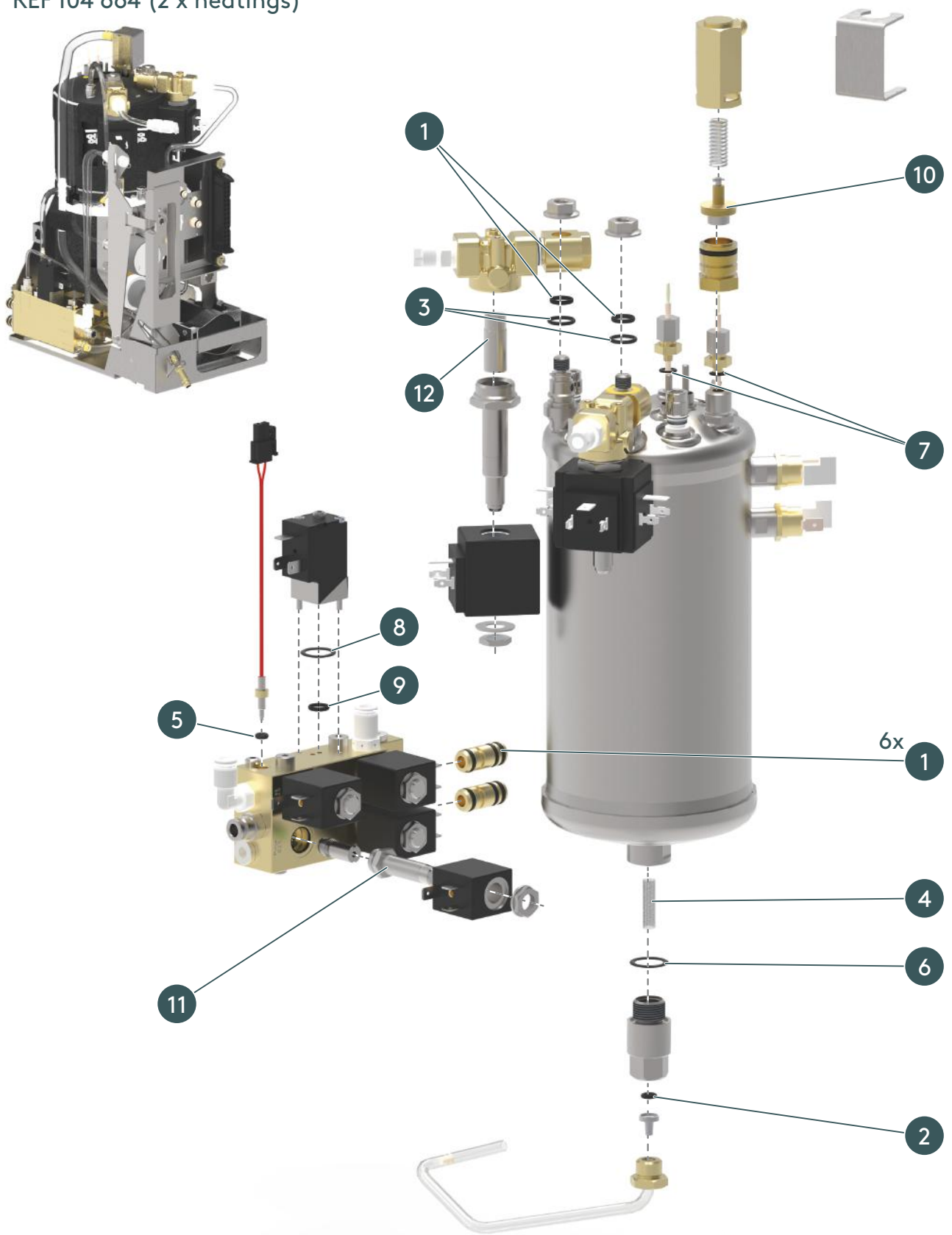


Fig. 1-20: Steam module overview

1.7.2 102 865 Kit SAV solenoid valve 25mm - ODE

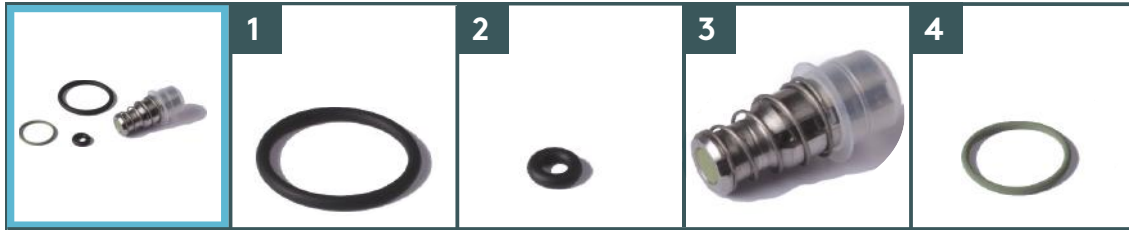


Fig. 1-21: 102 865

- | | | | | | |
|--------------------|-----|---|--------------------|-----|----------------------------------|
| (1) 100 217 | 1 x | O-ring $\varnothing 17.17 \times 1.78$ EPDM | (3) 102 917 | 1 x | Plunger for 25mm valve - ODE |
| (2) 102 167 | 1 x | O-ring $\varnothing 2.9 \times 1.78$ | (4) 102 921 | 1 x | O-ring $\varnothing 11 \times 1$ |

1.7.3 102 412/A - Kit SAV safety valve steam unit



Fig. 1-22: 102 412

- | | | | | | |
|--------------------|-----|--|--------------------|-----|-----------------------------|
| (1) 100 524 | 1 x | O-ring $\varnothing 15.6 \times 1.78$ EPDM | (3) 100 780 | 1 x | Plunger safety valve, assy. |
| (2) 100 566 | 1 x | Spring safety valve steam unit | | | |

1.7.4 102 867 Kit SAV valve 32mm - ODE



Fig. 1-23: 102 867

- | | | | | | |
|--------------------|-----|---|--------------------|-----|--|
| (1) 100 066 | 1 x | O-Ring $\varnothing 8.73 \times 1.78$ | (4) 101 097 | 1 x | O-ring $\varnothing 17 \times 1.5$ FPM |
| (2) 100 114 | 1 x | O-ring $\varnothing 10.82 \times 1.78$ EPDM | (5) 102 923 | 1 x | Plunger for valve 32mm - ODE |
| (3) 100 242 | 2 x | O-ring $\varnothing 6.07 \times 1.78$ EPDM | | | |



PAGE INTENTIONALLY LEFT BLANK

1.8 105 506 PM kit frame



Fig. 1-24: 105 506

- | | | | | | |
|--------------------|-----|---|---------------------|-----|---|
| (1) 100 066 | 8 x | O-Ring $\varnothing 8.73 \times 1.78$ | (8) 103 965 | 2 x | Foam damper drip tray |
| (2) 100 211 | 1 x | Tubular filter | (9) 100 112 | 3x | O-ring $\varnothing 4.47 \times 1.78$ |
| (3) 100 281 | 4 x | O-ring $\varnothing 3.69 \times 1.78$ EPDM | (10) 104 722 | 1x | Sil. braided hose 8/3- 1m cutted
Note: 540 mm Coffee
420 mm Americano. |
| (4) 100 702 | 1 x | Seal flat $\varnothing 15 \times \varnothing 11 \times 1.5$ | (11) 100 242 | 2x | O-ring $\varnothing 6.07 \times 1.78$ |
| (5) 100 712 | 1 x | O-ring $\varnothing 14 \times 1.78$ EPDM | (12) | | <i>1 x 106 732 Kit SAV valve 32mm water inlet ODE</i> |
| (6) 100 762 | 1 x | Aerator | | | |
| (7) 102 589 | 3 x | O-ring $\varnothing 6.75 \times 1.78$ EPDM | | | |

1.8.1 106 732 Kit SAV valve 32mm water inlet ODE



Fig. 1-25: 106 732

- | | | | | | |
|--------------------|-----|--|--------------------|-----|---|
| (1) 101 097 | 1 x | O-ring $\varnothing 17 \times 1.5$ FPM | (2) 103 994 | 1 x | Plunger water entry valve ($\varnothing 4.5$) - ODE |
|--------------------|-----|--|--------------------|-----|---|

1.8.2 Frame overview

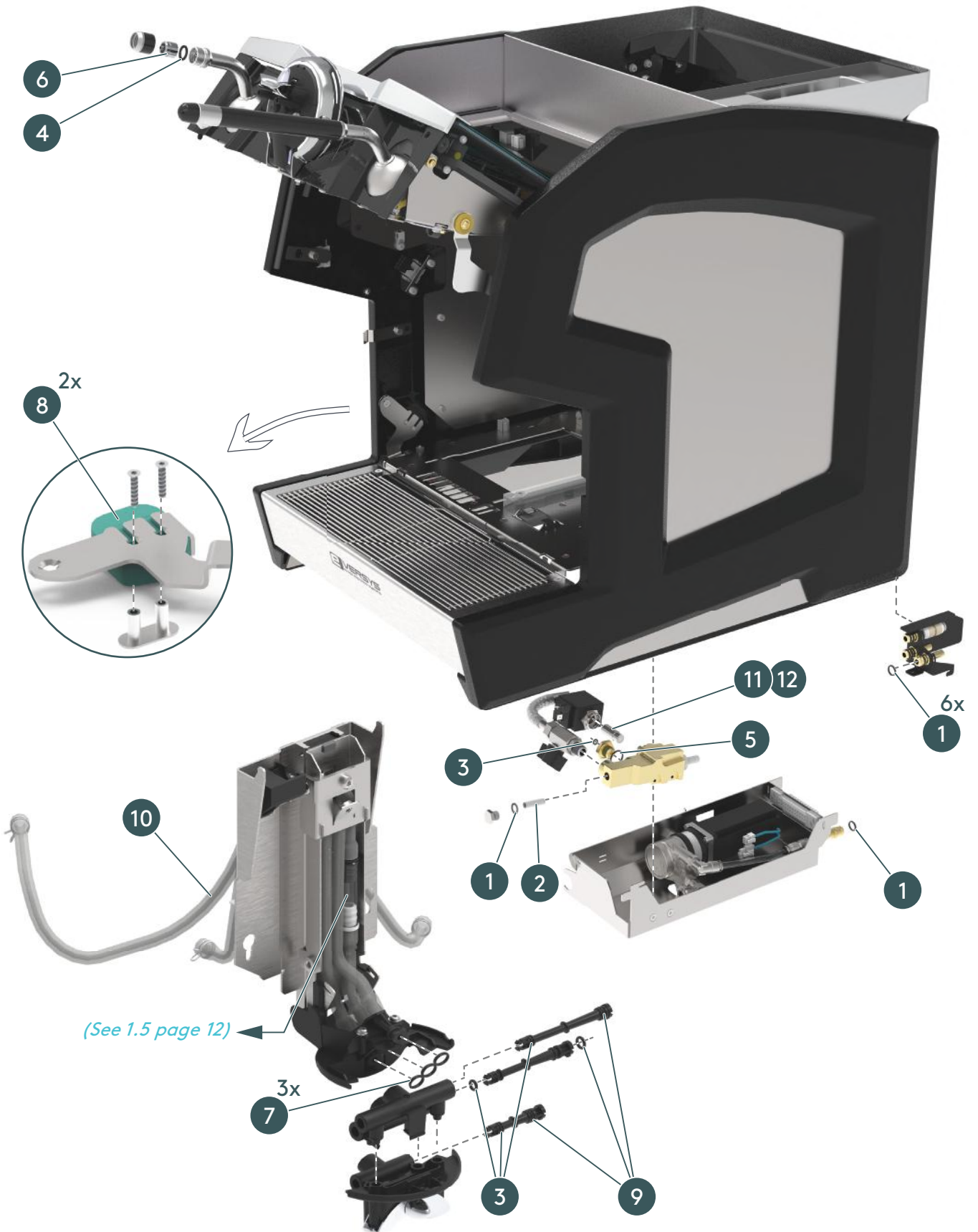


Fig. 1-26: Frame overview



PAGE INTENTIONALLY LEFT BLANK

Index

100 000

100 066	12, 14, 16, 18, 20, 22
100 112	6, 12, 18, 22
100 114	10, 12, 14, 16, 18, 20, 22
100 211	14, 18, 22
100 214	16
100 217	12, 14, 16, 20
100 242	12, 14, 16, 20, 22
100 255	8
100 281	6, 12, 14, 18, 22
100 524	18, 20
100 566	20
100 638	16
100 702	22
100 762	22
100 780	20
100 977	6
100 998	6

101 000

101 097	12, 16, 20, 22
101 169	6
101 667	12

102 000

102 167	16, 20
102 412	18, 20
102 589	14, 22
102 614	6, 14
102 826	5
102 865	16, 18, 20
102 867	12, 16, 18, 20, 22
102 905	10
102 917	12, 16, 20
102 921	16, 20
102 923	12, 16, 20
102 932	10

103 000

103 275	16
103 965	22
103 994	22

104 000

104 213	10, 12, 16
104 716	12
104 719	6
104 980	12
104 983	5
104 988	22

105 000

<i>105 163</i>	<i>6</i>
<i>105 233</i>	<i>5</i>
<i>105 251</i>	<i>6</i>
<i>105 456</i>	<i>5</i>
<i>105 458</i>	<i>5</i>
<i>105 460</i>	<i>5</i>
<i>105 462</i>	<i>5</i>
<i>105 463</i>	<i>5</i>
<i>105 464</i>	<i>5</i>
<i>105 506</i>	<i>5</i>
<i>105 512</i>	<i>18</i>
<i>106 732</i>	<i>22</i>



Eversys AG
Rue du Biais 19
1957 Ardon - Switzerland
+41 27 305 25 50

www.cameo-espresso.com
www.eversys.com
sales@eversys.com
f **g+** **in** **📷**



DISTRIBUTION

Eversys operates through a network of fully trained and reliable national and regional distributors. These partners provide a fully integrated service provision ranging from machine sales and servicing through to user training.

c'2 Cameo™, e'Connect™, e'Barista™, e'Foam™ and e'Clean™ are trademarked property of Eversys AG. This manual is designed for final user purpose only and information can be changed at any time without amending these instructions.